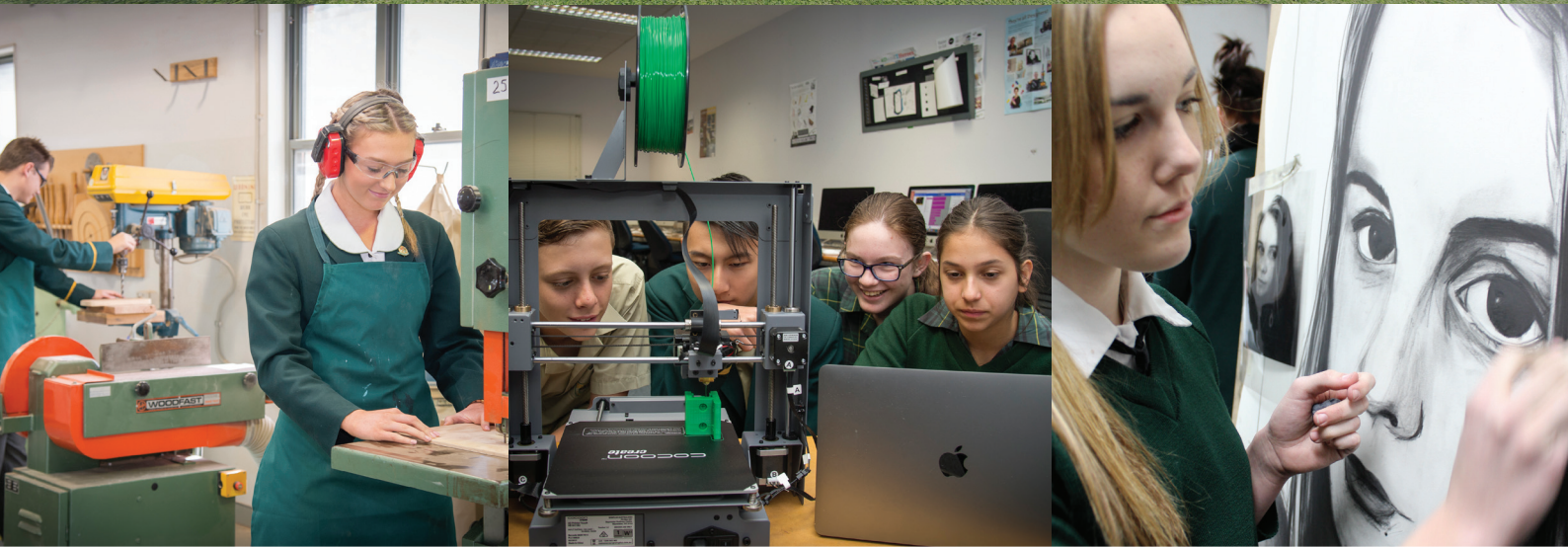


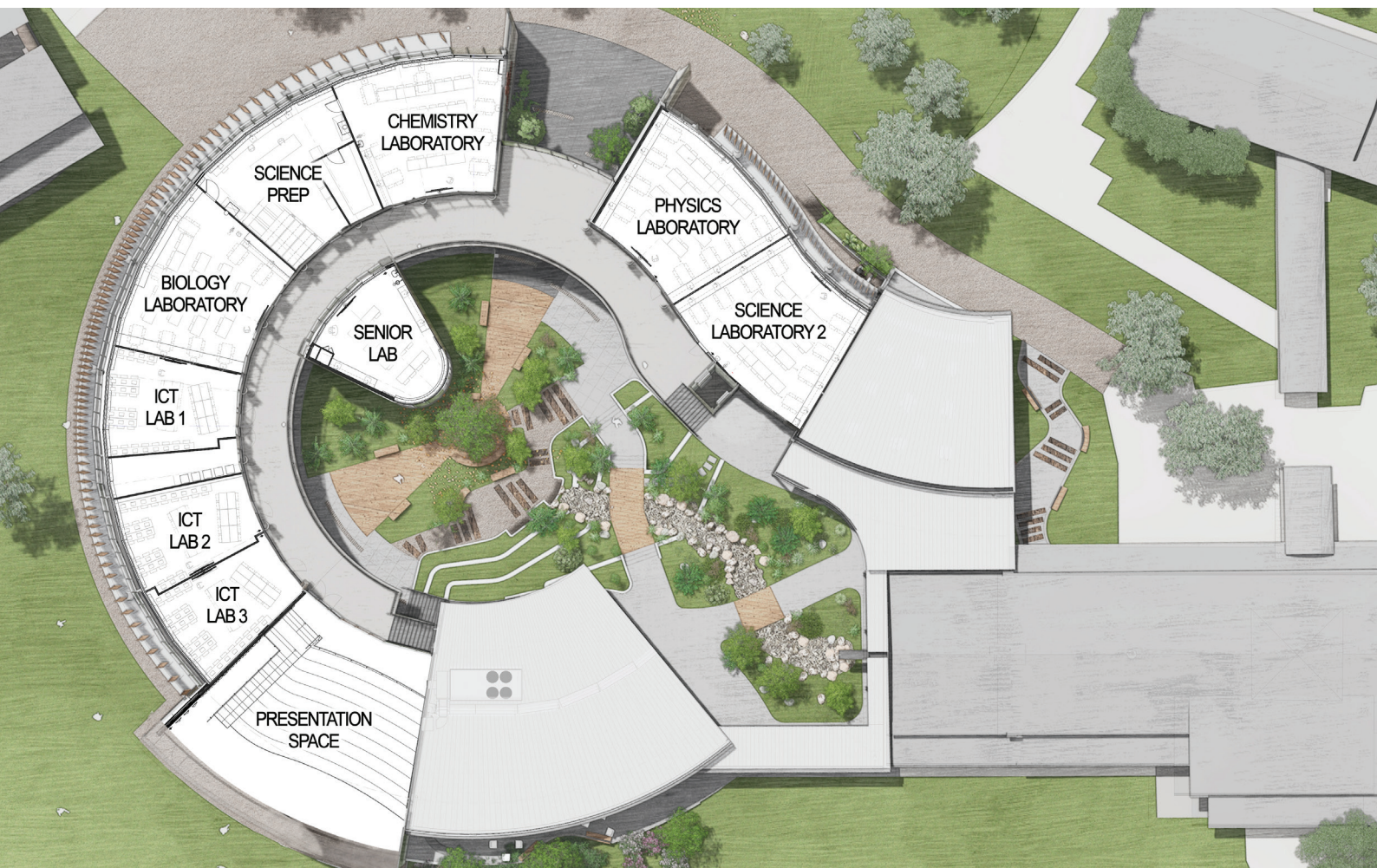


The Integrated Studies Building

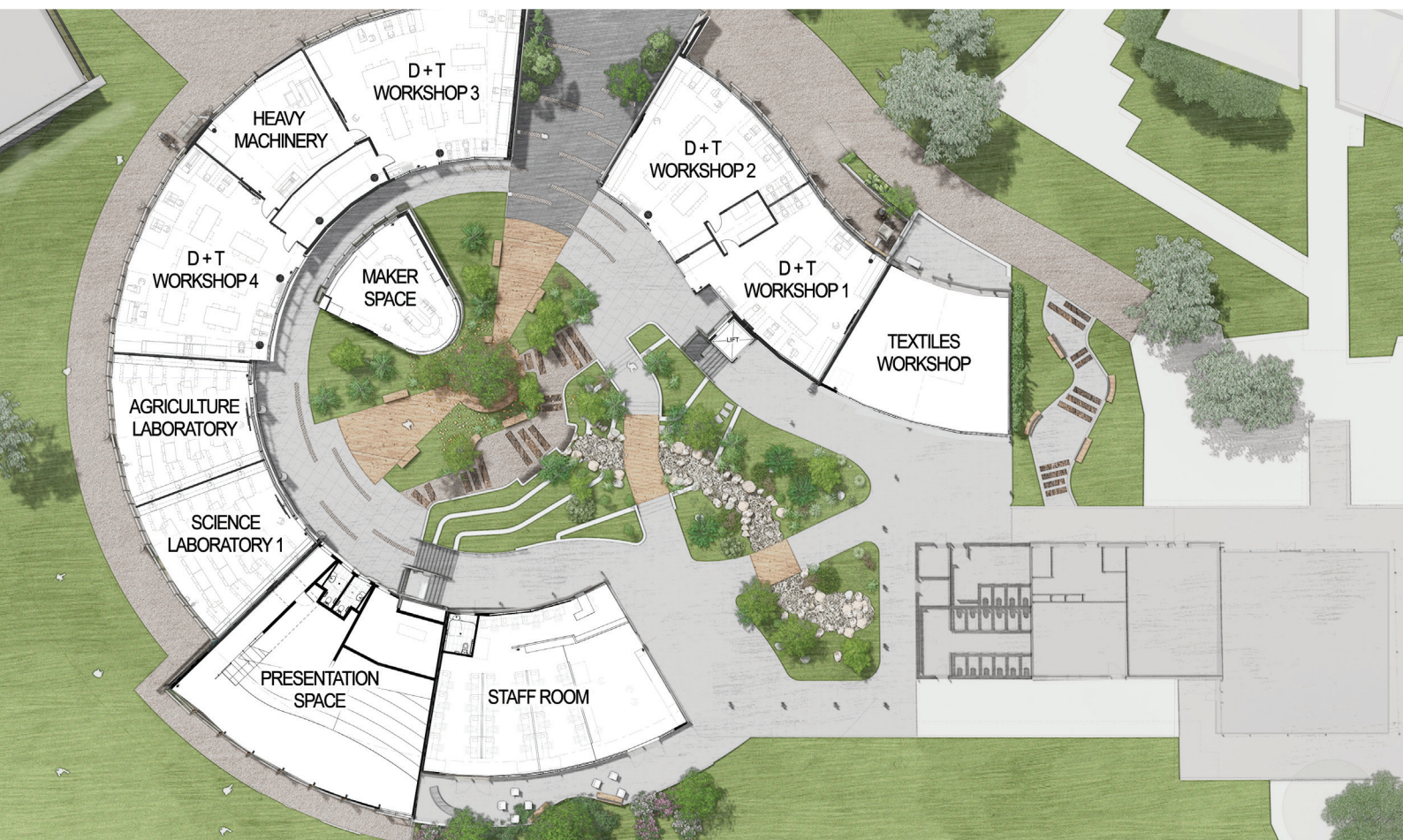


Empowering Students For Their Tomorrow

First Floor



Ground Floor





Integrated Studies Building





Not Just A Building - An Integrated Studies Precinct

The Integrated Studies precinct has been designed with significant input from the faculties of Science, Mathematics and the faculty of Technology and Creative Design. It will provide an innovative teaching and learning space fit for the demands of 21st Century learning. Through the creation of these dedicated spaces, the School intends to build on current initiatives and underpin the academic success of students within the scientific, technological and artistic disciplines.

Features of the ISB

The precinct itself is to be considered a teaching tool for students in environmental sustainability as well as innovation, engineering and entrepreneurial skills. Operational elements and structural elements will be exposed and labelled to show students the functions of design, engineering and environmental factors and how they interrelate.

The new precinct, once it is completed, will house several cross-curricular rooms, including the following functional areas:

- 5 Science Laboratories including one Senior Science Laboratory.
- 1 Science Preparation Room
- 1 Agriculture General Purpose Learning Area (GPLA)
- 4 Design and Technology Workshops
- 1 Textile and Clean Design Studio
- 3 Information and Computing Technology GPLAs
- A Design Store and Preparation Area
- Lecture / Demonstration Space
- Staff Facilities (23 Teachers across 3 Faculties with 6 Ancillary Staff)
- 6 Mathematics GPLAs#
- 3 Visual Arts Studios#
- Gallery Space#

These elements will form part of Phase 2 of the building project.



Significance Of This Project To The Macarthur Area

Why is this project significant to the wider Macarthur community?

"A rising tide will lift all boats" was a proverb popularised by American President John F. Kennedy. Macarthur Anglican School has witnessed the truth of this idiom as successive generations of bright and hardworking students have spurred one another on to greater and greater academic heights.

Today, over 90% of Macarthur students typically graduate with a HSC result that sees them matriculate for university. In practice this means many of our 'strugglers' and 'plodders' have achieved outcomes they may not have expected when they first enrolled.

But what is true in the microcosm of this school is also true for the greater Macarthur community. A premier school like Macarthur brings innumerable benefits to the community generally, as it raises the sights and aspirations of others more widely.

Every year Macarthur turns out graduates who will be tomorrow's community leaders in medicine, law, education, business, engineering and politics – just to name a few. They in turn will provide inspiration to their peers and future generations as they help build a better and more prosperous Macarthur region.

Macarthur's motto, *"Enter to Learn, Go out to Serve,"* articulates the School's outward focus to build community. This positive ethic is engendered in the student body through the curriculum and various service programmes. The Macarthur graduate is thoroughly schooled for a life of service and civic responsibility.

Providing a great education is the best investment a community can make to ensure long-term economic growth and a vibrant local community. A premier educational institution like Macarthur acts as a magnet, creating a momentum that attracts other like-minded families to the area.

How does the School know this? It is already happening. More and more aspirational and achieving families have bought into the area and made Macarthur their school of choice. The tide is already rising!

It is common sense that people will move and invest in a new area if a great school is ready to welcome their children. And many who choose to move to the Macarthur area will want that 'something extra' that an independent school like Macarthur provides.

In order to give their children the best opportunities of success in life, parents will want an established school, with established traditions, outstanding academic performance,

excellent facilities and a history of achievement and a school that empowers their children for tomorrow.

A welcoming and contemporary independent school with strong values and a vast array of co-curricular choices encourages newcomers to make this community their own. Macarthur assists their integration by facilitating and designing networks through the parent body that can enhance and develop business ties and interests.

Macarthur Anglican School is also committed to building community outside the classroom. Sporting programmes, musicals, vacation programmes and Agricultural displays are all open to members of the public and offer a wide variety of ways for parents and their children to interact and enjoy new experiences in their local school. Macarthur is a hub of activity and a centre of community life throughout the calendar year, not simply in term times.

As other local areas have discovered, building and growing premier educational institutions enhances the social and economic capital of the whole region. Macarthur is the premier school within the Macarthur area. To maintain its benefit for future generations it needs 21st Century facilities. It is a very worthwhile investment for those whose vision it is to see the Macarthur region ride the rising tide.

***"A rising
tide will lift
all boats"***



Alumna Dr Lauren McKnight



Science And Technology Alumni Success Stories

Siobhan Reddy (1996)

Siobhan rose to prominence in 2013 when she was judged by the BBC to be one of the top one hundred women to have the greatest impact on British politics, society, culture and the economy. After completing her HSC, Siobhan travelled to the UK to follow her passion for developing computer games. After working at several media companies, Siobhan's production experience was sought for the start-up of Media Molecule, based in Southwest London. The company has had extraordinary success including multiple awards for a number of games. Siobhan, who is the studio director, says that it was while she was at Macarthur that she fell in love with technology.

Dr Joseph Bevitt (1997)

Joseph is the Senior Instrument Scientist on the 'Dingo' neutron imaging facility at the Australian Nuclear Science and Technology Organisation (ANSTO). He is a world leader in the application of neutron imaging for palaeontology, archaeology and cultural heritage. His work involves using neutrons or X-rays with micrometer resolution to produce 3D images of objects on a computer. This is very useful with rare fossils or valuable ancient artefacts to see what is inside of them without extracting or destroying the object. As well as collaborating with both Australian and international museums and universities, Joseph also engages with industry to achieve commercial applications of neutron tomography. He is also a keen science communicator with a particular interest in the education, development and mentoring of young scientists.

Dr Natalie Fox (née Groat) (1993)

Natalie completed a Bachelor of Medical Science with first class honours and was awarded the University Medal from the University of Sydney in 1998. She went on to study Postgraduate Medicine at the University of Sydney, graduating with a Bachelor of Medicine and Bachelor of Surgery with Honours in 2002. She completed her internship and residency at Nepean Hospital before moving to Westmead Hospital. Natalie completed specialist exams in 2007 and then completed advanced training in Geriatric Medicine at Westmead, Blacktown and Nepean Hospitals. She was awarded specialist recognition in Geriatric Medicine by the Royal College of Physicians in 2011.

Dr Jayne Weller (1999)

Jayne has been awarded a Bachelor of Veterinary Science to add to her BA and BSc degrees, and has worked as the Clinical Veterinarian at the Avian, Reptile and Exotic Pet Hospital at the University of Sydney Camden campus along with research duties. Jayne was featured on the television programme called *Models of Achievement*, where she spoke of her upbringing and schooling, before studying to become a veterinary scientist. The programme showed Jayne at work and referred to her passion for conservation and sanctuary work. Jayne helped set up a conservation centre in Nepal providing a sanctuary for wild leopards that have been rescued from the illegal pet trade.

William McCormack (2002)

William established the Runnymede Group, a local firm specialising in electrical and communication installations for both commercial and residential constructions. The company provides lighting and audio visual work expertise and installation including security infrastructure.

Rachel Heriot (née Pataky) (1992)

Rachel studied Creative Arts at Wollongong University and worked in various Sydney design studios for many years. Rachel continues to work in design, art direction and photographic styling.

Rhys Cornock (2006)

After graduating with a Bachelor of Science, Rhys obtained work as a Material Scientist working in conjunction with St Vincent's Hospital and the University of Wollongong in the area of 3D printing applications in medicine. Rhys was featured in a technology article and video in 2014 in The Age newspaper, describing how hydrogels and polymers can be formulated using 3D printing to create three-dimensional constructs, which may in the future be implanted in the body to encourage regeneration of body tissues.

Ainsley Atkinson (née Noakes) (1994)

Ainsley completed a Bachelor of Environmental Science with Honours at the University of Wollongong and was awarded the University Medal for first place in the Faculty of Science for each year of her degree. She then worked at ANSTO before retraining as a teacher and has taught Geography and Legal Studies at The Illawarra Grammar School until recently.



Science And Technology Alumni Success Stories

Brinley Gread (2006)

Brinley completed a Diploma in Graphic Design and became the Sales and Marketing Manager at Driving Solutions, a company based at Sydney Motorsport Park, Eastern Creek. The company recently opened a new Driver Training Centre providing driver training for learners through to professional racing drivers. With the Driver Training Centre now in operation, and with his years of racing go-karts, Brinley now provides driver training and professional driving services to a range of clients and car companies all around Australia including Ford, Subaru, KIA and the NRMA.

Dr Jonathan Hartono (2008)

Jonathan moved to Brisbane immediately after completing his studies at Macarthur where he completed a Bachelor of Medicine and Bachelor of Surgery degrees. Jonathan is now the Senior Resident Doctor in Cardiology at the Prince Charles Hospital at Chermside in Brisbane and has already given many presentations in his field of expertise. His aim is to become a Hospital Registrar in Cardiology Vascular Surgery and ultimately wishes to enter the 6-year programme to become a Cardiology Specialist.

Dr Thomas Oliver (2007)

Following earlier studies, Thomas graduated from the University of Wollongong with a PhD. His field of research for the Doctoral degree was in coastal geomorphology and specifically, how beaches and seashores have changed over time. The research involved analysis of core samples and dating shore lines that are now sometimes hundreds of metres from the current shore position. Thomas did further post doctoral research at the University of Wollongong. Thomas is now providing educational services to the Australian Defence Force in Canberra.

Siobhan Papalia (2006)

Siobhan completed a Bachelor of Bio-Molecular Science and a Bachelor of Medical Science with Honours at the University of Western Sydney. Siobhan relocated to Canberra where she completed a Masters Degree in Biotechnology and Science Communications at the Australian National University. She moved to Perth at the end of 2014 and is currently working at SciTech, the Western Australian Science Technology Centre.



Dr Joseph Bevitt



School Funding – The Basics

The cost of the ISB cannot be met with fees alone! Fees are set at a level that covers the School's required recurrent expenditure with a modest surplus where sensible. School surpluses do not accumulate at levels that would allow the funding of major projects, and it would not be prudent to plan to do so in the near future. It is for this reason that the School has launched this very special appeal and seeks your investment in the lives of Macarthur students.

Australian Government funding from 2018 onwards

The Australian Government announced changes in 2017 to the 'Gonski' funding model which had been in place since 2014. The new funding model aims to transition all schools to a set share of Commonwealth funding. For Government schools, the Commonwealth share is 20% of their Schools Resource Standard (SRS) entitlements and for Non-Government schools the Commonwealth share is 80% of their SRS entitlement.

The Schools Resource Standard (SRS) funding model in brief

The core components of the SRS funding model have remained largely unchanged for the past 10 years and comprise base funding plus a number of loadings that aim to address educational disadvantage. The per-student component is based on the Schools Resource Standard (SRS) which aims to measure the cost-effective and efficient provision of education.

The loadings in the model are for:

- School location;
- School size;
- Socio-educational disadvantage;
- Indigenous students;
- Low English language proficiency;
- Students with disability.

Capacity to contribute

One feature of the funding model which only affects independent schools like Macarthur is the capacity to contribute (CTC). This means that the amount of base funding a school receives is dependent on a school community's estimated capacity to pay fees, as determined by a Direct Measure of Income (DMI) score. The higher the score, the lower per capita base funding a school receives.

State and Territory Government funding contributions

In addition to setting the Australian Government's share of SRS for all schools, legislation now also places requirements on the State and Territory Governments in relation to school funding. State and Territory Governments are required to fund Government schools 80% of their SRS and to fund Non-Government schools to 20% of their SRS.

Capital funding

On average over the past few years, parents and donors in independent school communities contributed 89% for capital developments such as school buildings, grounds and equipment.

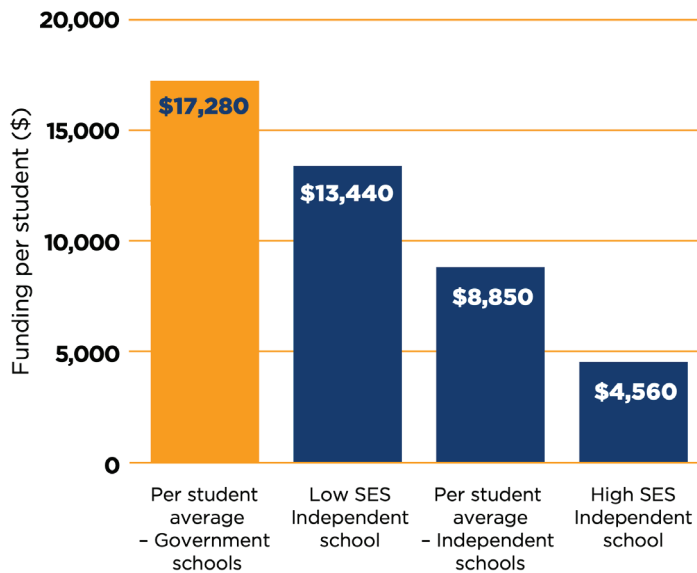
Throughout Macarthur's history, the School has only ever received Capital funding once under the Rudd Government's Building the Education Revolution (BER) scheme. This funding had very strict rules around it and the School built the Cranmer Room, The Lloyd Classrooms for Year 5 and 6 and the Transition multi room. The funding received was \$2.5m and was dependent on a co-contribution. Apart from this, and due to the SES score of the School, Macarthur has never been able to access Government capital funding.

Past support

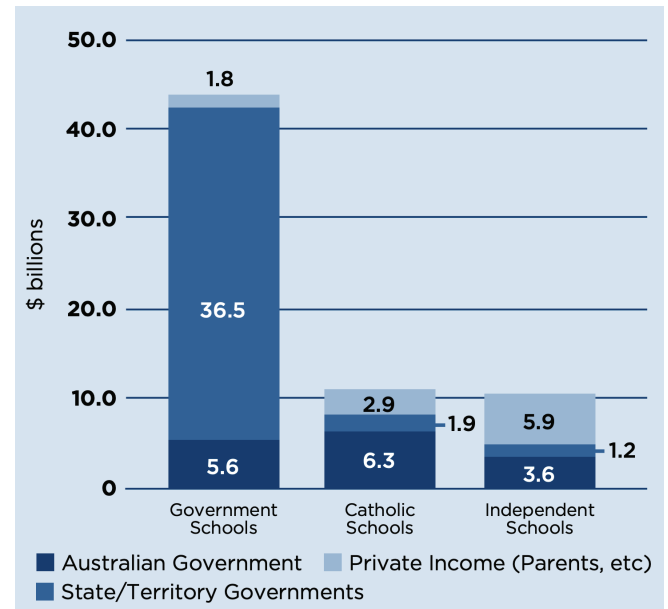
Macarthur would not be the School we know and love without the support and generosity of its community since it began. Each significant structural development at Macarthur has been enabled by some levels of support from the Macarthur community.



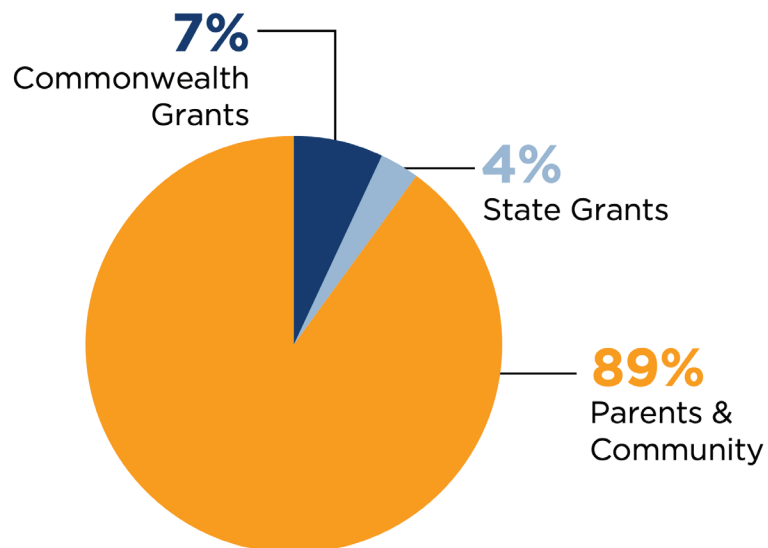
School Funding Charts



Funding per student



Recurrent Funding for School Education



Sources of Capital Funding in Independent Schools



ISB Project Budget

Total Project Costs	
Total Construction Cost	\$16,990,000
Consultant Fees on Phase 1 and 2	\$729,000
Fit Out	\$1,300,000
Contingency (10%)	\$1,699,000
TOTAL DEVELOPMENT COSTS	\$20,718,000
Auxiliary Costs	
Temporary Accommodation of Science Labs	\$300,000
Construction Road	\$100,000
Fundraising Costs	\$100,000
	\$21,218,000
Phase 1 Project Costs	
Total Construction Cost	\$9,980,000
Consultant Fees on Phase 1	\$529,000
Fit Out	\$1,000,000
Contingency (10%)	\$998,000
TOTAL DEVELOPMENT COSTS	\$12,507,000
Auxiliary Costs	
Temporary Accommodation of Science Labs	\$300,000
Construction Road	\$100,000
Fundraising Costs	\$100,000
	\$13,007,000
Source of Funds	
Cash Reserves and Prior Fundraising	\$4,000,000
Fundraising Target	\$5,000,000
Additional Loan Financing	\$4,000,000
	\$13,000,000



Tax Chart

Cost to Donor After Tax					
3 Year pledges	Annual Gift	32.5%	37%	45%	30%*
\$1,000,000	\$333,333	\$225,000	\$210,000	\$183,333	\$233,333
\$500,000	\$166,667	\$112,500	\$105,000	\$91,667	\$116,667
\$300,000	\$100,000	\$67,500	\$63,000	\$55,000	\$70,000
\$250,000	\$83,333	\$56,250	\$52,500	\$45,833	\$58,333
\$200,000	\$66,667	\$45,000	\$42,000	\$36,667	\$46,667
\$100,000	\$33,333	\$22,500	\$21,000	\$18,333	\$23,333
\$50,000	\$16,667	\$11,250	\$10,500	\$9,167	\$11,667
\$25,000	\$8,333	\$5,625	\$5,250	\$4,583	\$5,833
\$10,000	\$3,333	\$2,250	\$2,100	\$1,833	\$2,333
\$5,000	\$1,667	\$1,125	\$1,050	\$917	\$1,167
\$3,000	\$1,000	\$675	\$630	\$550	\$700
\$2,500	\$833	\$562	\$525	\$458	\$583
\$1000	\$333	\$225	\$210	\$183	\$233
\$500	\$167	\$113	\$105	\$92	\$117

*Company Tax - current at 1/7/2019

This table is based upon 2018-2019 individual income tax rates. The above rates do not include the Medicare levy of 2%. The exact level of your tax deductibility will vary depending on your present financial circumstances. Please seek assistance from an independent taxation professional for formal guidelines and guidance.



Overall Academic Success

Over the past 10 years Macarthur Anglican School's tradition of proven academic success has been steadily growing. In 2019 Macarthur ranked 52nd out of over 800 schools which had candidates sit the HSC that year, with the School placed in the top 7% of all schools in NSW. For several years Macarthur has been the top scoring comprehensive school in the greater Macarthur, Camden, Campbelltown and Wollondilly areas.

The Australian Tertiary Admission Rank is the measure used for matriculation or university entrance. Over the past five years the following average ATAR results have been achieved:

18% of students achieved an ATAR of 95 or higher

26% of students achieved an ATAR of 90 or higher

37% of students achieved an ATAR of 85 or higher

49% of students achieved an ATAR of 80 or higher

60% of students achieved an ATAR of 75 or higher

70% of students achieved an ATAR of 70 or higher

In addition, on average 7% of Macarthur's students are annually recognised as top achievers with Macarthur placed 7th in the State for the number of top achievers in one school.



Frequently Asked Questions

Why does Macarthur not borrow all the money and repay it from student fees?

The fees parents pay are already comparable to, or higher than, some other School Fees and are sufficient to cover recurrent costs and some regular maintenance. The fees are not sufficient to repay principal and interest on the additional \$10 million loan that would be required to fund 100% of the building cost. To ease the burden on parents, the School sets the fees at a level that covers recurrent operational expenses and achieves a modest surplus where prudent. The School does not run at surpluses that can support the debt levels of a project this size.

The School Council has a conservative policy of minimising debt in order to maintain sustainable School Fees and provide the best possible education for the students.

This opportunity calls for those who are benefiting now, or have benefited from the Macarthur experience in the past, to secure this vision for this and a new generation.

Why does the School need financial support for a project that has already begun?

The current economic environment that has been produced by the COVID-19 Pandemic has been a challenge for many families in the Macarthur area and beyond. Interestingly, however, COVID-19 has also provided opportunities and one such opportunity has arisen for Macarthur.

In the current climate the School received very attractive and competitive tenders from a number of construction firms well known in the educational sector. Securing the most attractive tender for this particular project required the School to act quickly to secure the tender and allow construction to begin forthwith. The School has borrowed more than it was intending for this project but did so to secure the tender and with the aim of the fundraising off-setting the additional loan with the intention of paying it down faster than planned.

Has the School put anything towards the costs?

Yes. Approximately \$4 million will be used from the School's current cash reserves built up from careful financial management and prior building fund contributions. The School aims to raise \$5 million toward this project with more of the project able to be completed depending on the fundraising success.

Why this scope of project? Not more? Not less?

The expansion of workshops, studios and laboratories will result in the School removing the very dilapidated Science demountable classrooms, replacing them with purpose built modern laboratories and provide the integration with other key faculties facilitating 21st Century learning.

Is this the best solution for the future of Macarthur Anglican School?

The construction of a purpose built Integrated Studies Building is vital for the ongoing development of Science, Technology and Design education at Macarthur, both today and into the future. Solid, technologically advanced classrooms are also vital to provide our students with the best educational environment possible. The School Council believes these are the two most urgent needs at Macarthur at this point in its development.

How does this project fit in with the Building Fund Contribution?

Some money which has been accumulated over the years from building fund contributions has already been used for this project to develop plans, apply for the DA and other consultancy work. However, much of the existing Building Fund money is used for regular capital improvements on the site such as shade areas; sound and lighting in the Chapel for performances; and, to service debt on current building loans. Through this fund and prudent financial management, a seed fund of \$4 million is available to commence the project.

Why doesn't Macarthur just refurbish the old labs?

It is not just about kitting out labs. There is a sense of re-purpose and re-development and kindling of a real passion for Science, Technology and Design at Macarthur and integrating this across disciplines.

Refurbishing the very old demountables would only prolong their use in the short term and would be an unwise investment. The result of refurbishment would not come near to the opportunities offered by the purpose built nature of the new Integrated Studies Building.



Designated Gifts And Naming Rights

At the discretion of the School Council and in accordance with the Council Policy Manual, unless specifically requested otherwise, donors will be recognised in the following way:

PRINCIPAL: Gifts of \$1,000,000 +

- Naming rights for the Integrated Studies Building for a gift of \$1,000,000 or above with the name to be approved by School Council
- Listing on the Honour Board/decorative acknowledgement e.g. a donors tree
- A framed Certificate of Appreciation
- Listing in the Macarthur Annual Report, newsletter and website for the duration of the Campaign
- Invitations to the Official Opening with a partner and eight additional guests
- Principal Donors will be placed on the School's Companions list. School Companions will be guests of the School at all relevant special events
- Principal Donors will be offered priority seating and priority booking opportunities to events*
- Principal Donors will remain on the School's Companions list for 20 years

GUARDIANS: Gifts between \$250,000 < \$500,000

- Naming rights to specific areas of the building appropriate to the gift level with the name to be approved by School Council e.g. classroom or laboratory; a significant inscription
- Listing on the Honour Board/decorative acknowledgement e.g. a donors tree
- Recognition as a member of the Macarthur Fellowship^
- A framed Certificate of Appreciation
- Listing in the Macarthur Annual Report, newsletter and website for the duration of the Campaign
- Invitations to the Official Opening with a partner and four additional guests
- Guardians will be placed on the School's Companions list. School Companions will be sent personalised complimentary invitations to all relevant special events. Guardians will be offered priority seating and priority booking opportunities to events*
- Guardians will remain on the School's Companions list for 10 years

CUSTODIANS: Gifts between \$500,000 < \$1,000,000

- Naming rights to specific areas of the building appropriate to the gift level with the name to be approved by School Council e.g. The Atrium; the Demonstration Space, Senior Science Laboratory
- Listing on the Honour Board/decorative acknowledgement e.g. a donors tree
- A framed Certificate of Appreciation
- Listing in the Macarthur Annual Report, newsletter and website for the duration of the Campaign
- Invitations to the Official Opening with a partner and six additional guests
- Custodians will be placed on the School's Companions list. School Companions will be guests of the School at all relevant special events
- Custodians will be offered priority seating and priority booking opportunities to events*
- Custodians will remain on the School's Companions list for 15 years

PARTNERS: Gifts between \$100,000 < \$250,000

- Naming rights to specific areas of the building appropriate to the gift level with the name to be approved by School Council e.g. walkways
- Listing on the Honour Board/decorative acknowledgement e.g. a donors tree
- Recognition as a member of the Macarthur Fellowship^
- A framed Certificate of Appreciation
- Listing in the Macarthur Annual Report, newsletter and website for the duration of the Campaign
- Invitations to the Official Opening with a partner and three additional guests
- Partners will be placed on the School's Companions list. School Companions will be guests of the School at all relevant special events
- Partners will be offered priority seating and priority booking opportunities to events*
- Partners will remain on the School's Companions list for 5 years



Designated Gifts And Naming Rights

COLLEAGUES: Gifts between \$25,000 < \$100,000

- Naming rights to a specific area of the building appropriate to the gift level with the name to be approved by School Council e.g. Laboratory bench or Workshop benches; equipment
- Listing on the Honour Board/decorative acknowledgement e.g. a donors tree
- Recognition as a member of the Macarthur Fellowship (for gifts of \$50,000 or greater)[^]
- A framed Certificate of Appreciation
- Listing in the Macarthur Annual Report, newsletter and website for the duration of the Campaign
- Invitations to the Official Opening with a partner and two additional guests
- Colleagues will be placed on the School's Companions list. School Companions will be guests of the School at all relevant special events
- Colleagues will be offered priority seating and priority booking opportunities to events*
- Colleagues will remain on the School's Companions list for 2 years

COLLABORATORS: Gifts between \$5,000 < \$25,000

- Listing on the Honour Board/decorative acknowledgement e.g. a donors tree
- A Certificate of Appreciation
- Listing in the Macarthur Annual Report, newsletter and website for the duration of the Campaign
- Invitation to the Official Opening with a partner and one additional guest
- Collaborators will be placed on the School's Companions list. School Companions will be guests of the School at all relevant special events
- Collaborators will be offered priority seating and priority booking opportunities to events*

FRIENDS: Gifts between \$5,000 < \$1,000

- Listing on the Honour Board/decorative acknowledgement e.g. a donors tree
- A Certificate of Appreciation
- Listing in the Macarthur Annual Report, newsletter and website for the duration of the Campaign
- Invitation to the Official Opening with a partner

DONORS: Gifts < \$1,000

- Appropriate listing on the Honour Board/decorative acknowledgement e.g. a donors tree
- A Certificate of Appreciation
- Listing in the Macarthur Annual Report, newsletter and website for the duration of the Campaign

Donations and Pledges

Donations can be made as either a one-off donation or an initial donation with pledges of additional donations, generally monthly or annually for the following two years (ie three years of contributions).

The Tax Table contained in this pack provides a comparison for three year pledges.

Donations and Pledges can be recorded on the Donation and Pledge Form which is also contained in this pack.

All gifts are tax deductible.

Anonymous donations will be recognised as such.

All recognition will be retained in situ until further refurbishment is required then relocated as appropriate.

Please note:

**Donors will not be offered discounts or free entry if an event is for fundraising purposes.*

[^]Recognition as a member of the Macarthur Fellowship will be acknowledged for gifts of \$50,000 or greater by an individual or family and donors will be invited to the Headmaster's Special Events e.g. Pre-dinner drinks at the Annual Dinner; drinks prior to or post other events.



Donation And Pledge Form

EXPAND, EVOLVE, EXPERIENCE

A new building project incorporating modern, effective laboratories and classrooms to inspire integrated learning across faculties.

Yes, I/We* will invest in this exciting project (*please circle as appropriate)

Title: _____ Post Nominals: _____

First Name: _____ Family Name: _____

Address: _____

State: _____ Postcode: _____ Email Address: _____

Day Time Phone: (_____) _____ Mobile: _____

I/We* intend to contribute a total of \$ _____ in the manner shown below *(details continue overleaf)*

☐ By Direct Debit

☐ By charge to my Credit Card once only the amount of \$ _____

☐ By charge to my Credit Card annually with the first contribution of \$ _____ payable on
(date) ____/____/____ and thereafter on that date for \$ _____ for the following two years

☐ By charge to my Credit Card monthly/quarterly* with the first contribution of \$ _____ payable
on (date) ____/____/____ and thereafter on the _____ day of the month for three years

☐ One-off cheque which is attached and made payable to *Macarthur Anglican School Building Fund*

☐ By 3 annual cheques made payable to *Macarthur Anglican School Building Fund*, the first contribution of
\$ _____ is attached with further annual contributions of \$ _____

*(*please circle as appropriate)*

All donations of \$2 or more are tax deductible

Credit Card Payment Details

☐ MasterCard

☐ Visa

☐ American Express

Name on Card: _____

Card Number: _____ Expiry Date: ____/____

Signature: _____ CVV: _____

Direct Debit Payment Details

Bank Account Name: **MAS Building Fund**

BSB: **062-516**

Account Number: **10424413**

Please include the reference code **MASCC** followed by your family name (eg MASCC - Family Name) and inform us by email at capitalcampaign@macarthur.nsw.edu.au

☐ I/We* wish to remain anonymous (**please circle as appropriate*)

☐ I/We* are happy for my/our donation to be publicised and prefer our name to be recorded as follows:

Other ways I would like to give:

☐ I have left Macarthur Anglican School a gift in my Will.

☐ I intend to leave Macarthur Anglican School a gift in my Will.

☐ Please send me information about Wills and Gifts in Wills.

THANK YOU FOR YOUR GIFT

Please return to:

Macarthur Anglican School Building Fund

PO Box 555, Camden NSW 2570 Australia

or

Reply Paid 555, Camden NSW 2570 Australia

Phone +61 (0) 2 4647 5333 **Facsimile** +61 (0) 2 4647 5444

Email capitalcampaign@macarthur.nsw.edu.au

Macarthur Anglican School respects your privacy; we do not disclose any personal contact information.





Macarthur Anglican School

Address 605 Cobbitty Road, Cobbitty, NSW 2570 Australia

Phone +61 (0) 2 4647 5333

Email administration@macarthur.nsw.edu.au

Website macarthur.nsw.edu.au